

ATTACHMENT C

**ELIZABETH MCCRAE PLAYGROUND –
COMMUNITY CONSULTATION
PRESENTATION REVISED CONCEPT
DESIGN**

Background

The City's Small Parks and Playgrounds Renewal Program is continuing to improve the quality of our open green spaces for all the community to enjoy.

A concept design was prepared and presented to the community in August and September 2015.

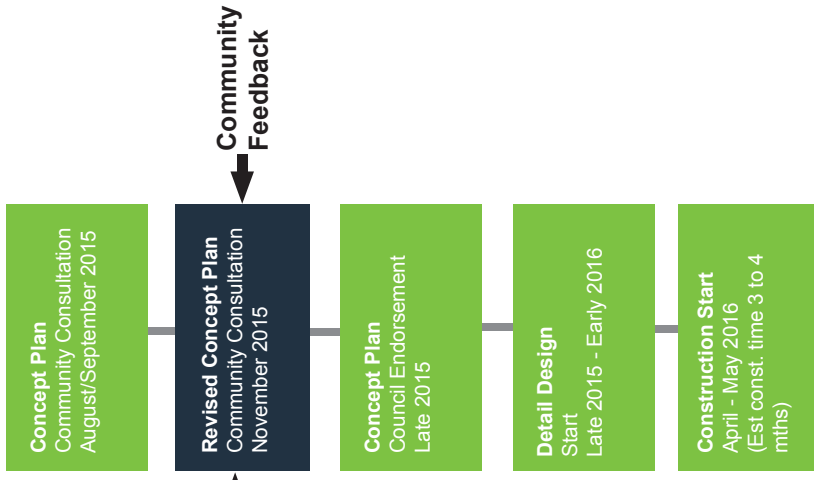
As a result of community consultation we have revised the initial design for the playground to incorporate your feedback.

The key comments received were:

- Provide play equipment suitable for young children (5years and under)
- Provide individual swings rather than a large basket swing
- Increase the lawn area for free play
- Provide more shade trees around the seating area
- Provide more seating under the existing trees and shade structure

We invite you to comment on the refined proposal for Elizabeth McCrae Playground.

Project Timeline



Aerial photograph • Elizabeth McCrae Playground



General Enquiries

Tel 9265 9333
council@cityofsydney.nsw.gov.au
www.cityofsydney.nsw.gov.au

If you would like to speak with a council officer about this project, you can contact
 Veronica Guadagnini, Design Manager
 at vguadagnini@cityofsydney.nsw.gov.au

Postal Address

City of Sydney
 GPO Box 1591 Sydney NSW 2001

Website

You can also view these plans and make comment online at:
www.sydneyyoursay.com.au

Next Steps

We will use your feedback on the concept plan to develop the detailed design.
 The revised concept plan is open for comments until 17 November 2015.

Send your comments to:
 email - MRobinson@cityofsydney.nsw.gov.au
 fax - 9265 9566

Elizabeth McCrae (Kepos Street) Playground • Redfern

Overview

Elizabeth McCrae Playground was occupied by glass work factories from 1905 to 1933. In 1933, the building was leased to Cinesound Studios. The land was vacant from 1947 until acquired by the council and transformed into a park around 1952-53.

The site has a northern aspect with street frontage on Zamia and Kepos Streets and Kepos Lane. An existing terrace house wall adjoins the park along the southern boundary.

Design Approach

To enhance the function of the park for local children and their families, the existing lawn area will be kept and renewed so that young children can play freely on the grass. We will also provide additional seating and shade throughout the playground.

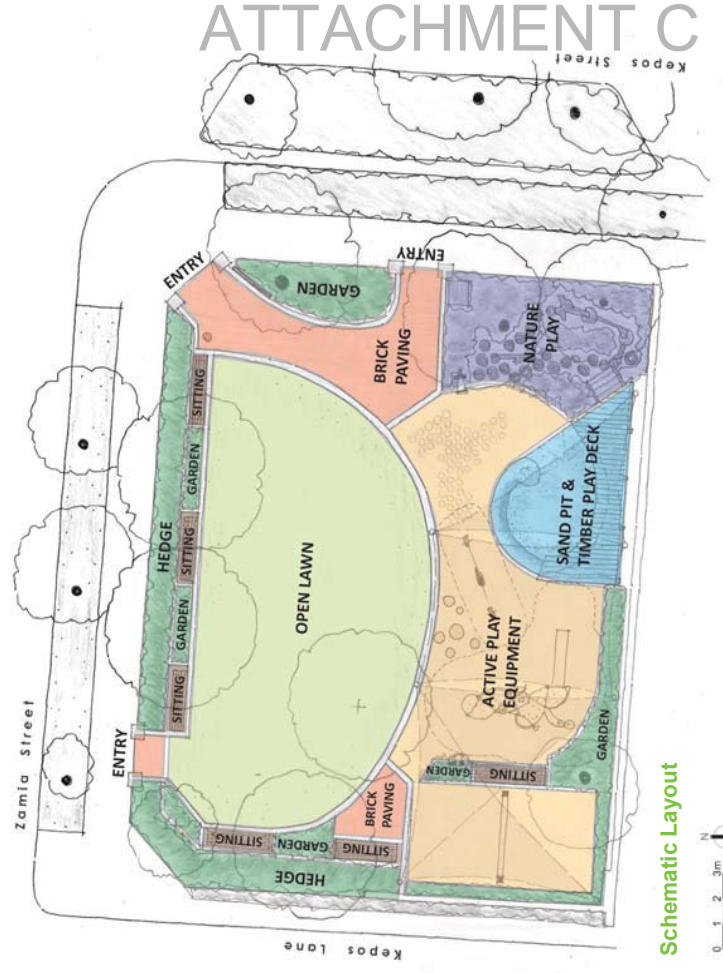
Design Principles

- Retain and enhance the existing park character
- Provide an imaginative space for children to play and be active in a natural environment
- Refurbish park furniture and facilities, with high quality, robust materials
- Increase the useable lawn and native habitat area
- Provide an open and safe space in which parents can clearly see their children throughout the park
- Improve paths into and within the park to allow easy access and movement through the park for parents and children



As part of the revised design, we propose to:

- Install new playground equipment for young children (5 years and under)
- Retain the existing park walls and gates
- Renew the existing lawn area
- Plant deciduous trees to provide winter sun and summer shade
- Add two new swings and a sand pit
- Remove the basketball court
- Extend the shade structure
- Add more seating under the shade
- Install a new bubbler with drinking water



Schematic Layout

Refined Concept

Perimeter fencing, gate and path

1. Existing park fences and gates retained
2. New recycled brick path to improve access

Park amenities

3. Timber bench seats
4. Low wall and timber decking
5. Park signage with historical information
6. Water bubbler
7. Rubbish bin
8. Shade structure

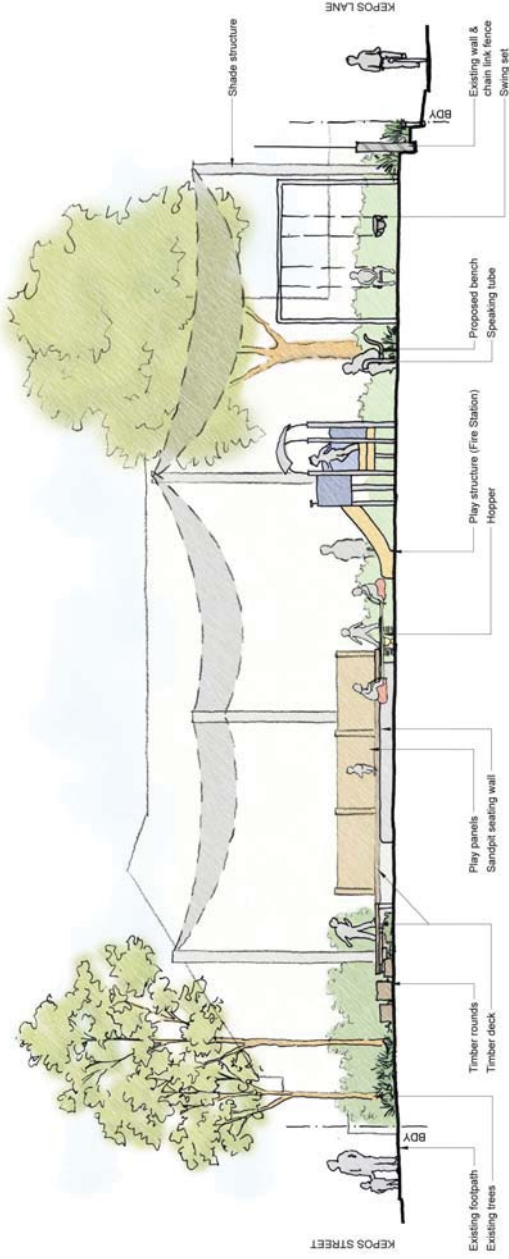
Garden, trees, hedges and lawn

9. Open lawn area
10. Existing tree
11. New shade tree
12. Existing tree relocated
13. Existing garden beds
14. New ground cover, shrubs and climber planting along existing fence



Playground

15. Two new swings with a strap and toddlers seats
16. Colourful soft fall mounds suitable for young children to climb and crawl on
17. Nature play space with low timber rounds, balancing timber logs and soft planting
18. Covered sand pit
19. Play panels on the decking providing various interactive elements and surfaces
20. Play structure for climbing, sliding and balancing. It also has a little counter and windows to simulate playing "shops" and other games
21. New seesaw
22. Circle patterns in the soft fall area suitable for games
23. Speaking tubes



Elevation facing south

Refer to legend on page 3 to see location for the following park features:

Play space

The playground has been redesigned to focus on play opportunities suitable for children 5 years and under. Additional play equipment including a covered sand pit, seesaw, mounds, speaking tubes and play panels have been included as part of the playground upgrade.

Covered sand pits have been successfully used in other City of Sydney playgrounds and encourage community management of the park to keep the sand clean.

The new play structure is ideal for young children to climb, slide, bounce and balance on.

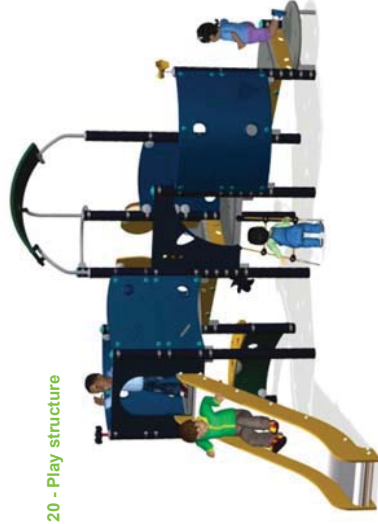
The open grass lawn and the soft fall area will enable children to freely toddle, walk and run around.

The nature play zone has been reduced in size and provides opportunity for children with a broad range of abilities to develop their fine motor skills. The sand pit will enrich the nature play area and will provide “hands-on” play.

We will ensure the nature play complies with playground design codes to ensure a safe and rich play environment.

The swings will be located in the protected south west corner of the park. The basket swing initially proposed has been replaced with a pair of strap and toddler bucket swings.

Trees have been relocated to the edges of the park to increase usable lawn area and the play equipment has been positioned to allow free circulation within the park.



20 - Play structure



21 - Seesaw



15 - Swings



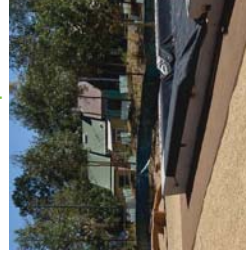
16 - Soft fall mounds



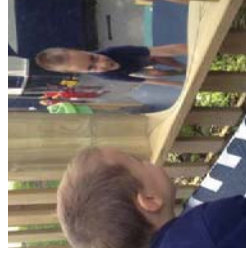
17 - Low timber rounds



17 - Balancing logs



18 - Covered sand pit



19 - Reflective mirrors



22 - Circle patterns on soft fall



23 - Speaking tubes

Examples of material



2 - Recycled brick paving



3 - Timber benches



4 - Timber decking



4 - Seating wall



5 - Historical info

Material and Finishes

The palette of materials and finishes reflects the inner city residential character surrounding the playground.

Recycled brick paver and timber reference the properties of local residents, and reflect the use of Elizabeth McCrae Playground as an extension of the local community's own backyards.

Existing seating on the site will be rejuvenated and re-used together with additional benches of similar style and the concrete wall and decking around the new sand pit will provide additional informal seating under the shade structure.

Natural materials, such as sand and timber logs will enhance the experience for children in the playground.

Planting Strategy

The existing lawn area will be retained and renovated to provide fan area for rest and relaxation.

The two deciduous trees located in the lawn will be transplanted to a new suitable location in order to expand the usable grass area.

Four new medium size deciduous trees will be planted on the edges of the park and playground providing summer shade and winter sunlight.

The garden bed along the Kepos Street frontage of the park will be planted with groundcovers that are resilient and allow for children's nature play.

Climbing vines will be planted on the retained section of the chain wire fence providing additional shade to the swing area.

Existing hedging



Soft grasses



Deciduous trees



Resilient plant species

